

## REFERENCES

## CONTACT

**GICON®**  
Group

Over the past three decades we contributed to on- and offshore wind projects around the globe with a cumulative capacity of more than 30 GW. The following selected references underline our track record.

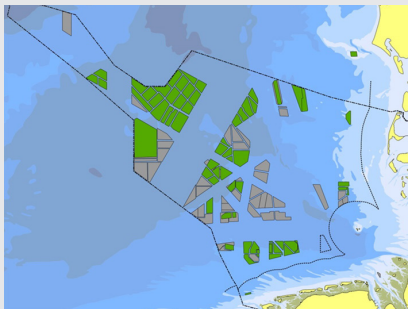
### REFERENCES

- Environmental approval planning
- Environmental monitoring
- Environmental surveys and consenting

(Find specific areas in Germany below)

- Geological surveys, sampling, laboratory program
- Geological site management
- Drilling supervision

- Multiple complete multi-megawatt wind turbine developments (on- and offshore)
- FEED & DDE of floating substructure GICON®-TLP
- Repowering of onshore wind farms
- High-altitude wind measurement campaign with highest ever built measurement mast (300m)



North Sea activities of GICON®-Maritime (green areas)

### **Dr.-Ing. Frank Adam**

Head of Department

T: +49 174 32365 45

E: f.adam@gicon.de

### **GICON®**

#### **Grossmann Ingenieur Consult GmbH**

Carl-Hopp-Straße 4a

18069 Rostock | Germany

T: +49 381 252312-00

F: +49 381 252312-29

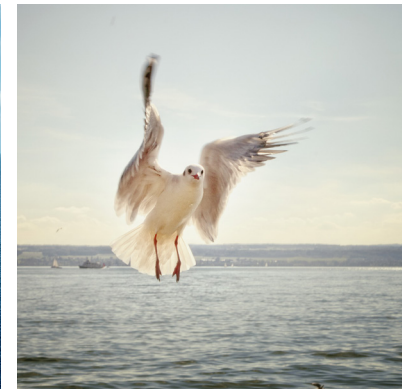
E: info@gicon.de



[www.gicon.de/gicon-group](http://www.gicon.de/gicon-group)

Member of the  
**GICON®**  
Group

GICON®-Grossmann Ingenieur Consult GmbH is part of the GICON® Group, a group of companies providing independently operating engineering services. The companies together employ over 450 people and draw on the expertise of several thousand projects at home and abroad.



Stand 02/2022

## **GICON®-MARITIME**

**Wind Engineering, Environmental and  
Geotechnical Surveys and Assessments**

## WHO WE ARE

GICON® Maritime comprises services of the GICON® Group members IfAÖ, GLU Freiberg, GICON® Consult and Windrad Engineering.



We are experts for technical and environmental planning of wind farms and support you in all phases of your offshore wind farm development. Your advantages: you can rely on years of experience in the field of offshore surveying and wind engineering. We support you from the site assessment and wind farm concept development over ecological and geotechnical surveys up to the engineering of foundations and substructures of your wind farm. As a members of different international wind energy networks, we always rely on the latest findings of the industry.

As part of the GICON® Group, we can take an interdisciplinary approach to your projects, have access to worldwide references and over 400 engineers throughout Europe to guarantee implementation "from a single source".

Our clients come from the following areas:

- Oil & gas
- Off-/Onshore wind
- Solar energy
- Public authorities

## ENVIRONMENTAL AND GEOTECHNICAL SURVEYS

IfAÖ (Institute for Applied Ecosystem Research) are specialists for environmental assessments, monitoring and surveys for your wind farm project, starting with early-stage baseline studies and approval planning up to monitoring your project's construction and operation. We are experts in ornithology, ichthyology, marine mammals as well as in terrestrial ecology and benthic habitats.

### CORE ENVIRONMENTAL SERVICES:

- Offshore surveys and investigations
- Offshore monitoring
- Marine environmental and approval planning
- Preparation of all relevant environmental reports and documents such as individual case studies, EIA and more

[www.ifaoe.de/en](http://www.ifaoe.de/en)

GLU Freiberg (Geological Surveys Freiberg) is your partner for geological surveys and soil or stone sampling and analysis. We support your wind farm project from geophysical exploration up to decommissioning.

### CORE GEOLOGICAL SERVICES:

- Geophysical exploration and surveys
- Geological site assessment
- Geotechnical calculations and technical planning
- Geotechnical site management and quality assurance

[www.glu-freiberg.de/en](http://www.glu-freiberg.de/en)

## WIND ENGINEERING

As a result of many years of experience, **GICON®-Consult and Windrad Engineering** offer a large variety of services for onshore and offshore wind projects. As one of Floating Wind's pioneers, we rely on a comprehensive expertise in this field.

### OFFSHORE WIND SERVICES

- Early-stage offshore wind farm development
- Fixed and floating substructure design
- Foundation design and certification
- Component design (tower, blades, drive train) and certification
- Fully coupled load simulations
- Floating substation design

### ONSHORE WIND SERVICES

- High-altitude wind measurements (>300m)
- Structural design of wind turbines
- Owner's engineering and consulting
- AEP optimization

[www.gicon-consult.de/company](http://www.gicon-consult.de/company)

[www.windrad-online.de](http://www.windrad-online.de)

